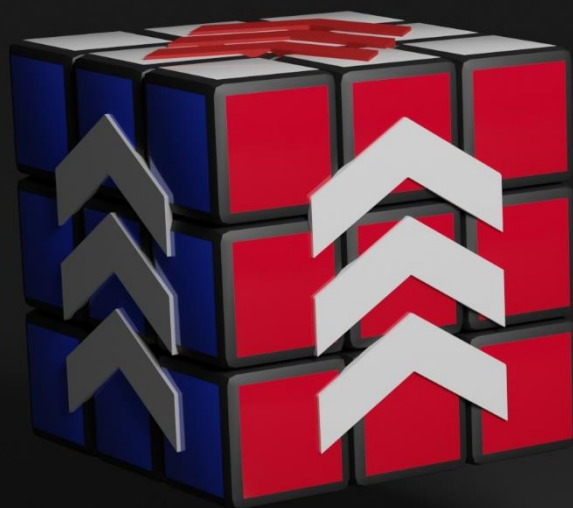


# CARDIFF CAPITAL REGION (CCR) CHALLENGE FUND



---

Round 2

Application Guidelines for Challenge Owners



Cronfa  
Her  
Prifddinas  
Ranbarth  
Caerdydd

Cardiff  
Capital  
Region  
Challenge  
Fund



## What is the CCR Challenge Fund?

The Challenge Fund aims to address societal, environmental, and economic challenges in the Cardiff Capital Region by bringing together public, private and third sector organisations in the region to respond to these challenges and drive positive change through innovation.

As a public sector body, your role in the Challenge Fund is to propose and develop a challenge idea. Should your idea be awarded funding you will then connect and collaborate with potential suppliers (solution providers) who will develop innovative products and services to meet your challenge.

As a Challenge owner it will be your responsibility to lead the challenge. Potential solution providers will be identified through a competitive procurement exercise, then you will collaborate with the solution providers to design, develop, and test the services and products to deliver results, and provide a route to market for commercial opportunities.

The co-creation of new solutions should tackle societal issues and radical improvements in service delivery, stimulating local economic benefits in the Cardiff Capital Region.

---

## CCR Challenge Fund Support & Funding

Support and funding are available for:

- Management and project delivery support for both challenge owner and solution providers (suppliers from private, third or public sector)
- Feasibility projects
- Proof of Concept / Demonstration projects
- First implementation towards commercial scaling by the solution provider



## The Delivery Team

The CCR have engaged Cardiff University's Centre of Innovation Policy research (CIPR) and Y Lab to develop and deliver a £10m Challenge Fund programme to develop, test and scale innovative solutions for and with the people who deliver and use them.

We are working with our sister Programme [InFuSe](#) to build capacity and capabilities to nurture an innovation 'ecosystem' in public sector organisations in the Region.



## Innovating Together

During the pandemic we have witnessed excellent examples of unlikely collaborations, creative thinking, and innovation from SMEs, third and public sector organisations. There is a renewed motivation and expertise in our region to respond to challenges to develop new and different ways of working. We want organisations to continue to grow and innovate.



The Challenge Fund encourages public sector organisations in the Region to identify issues or problems and to act as the catalyst for innovation.

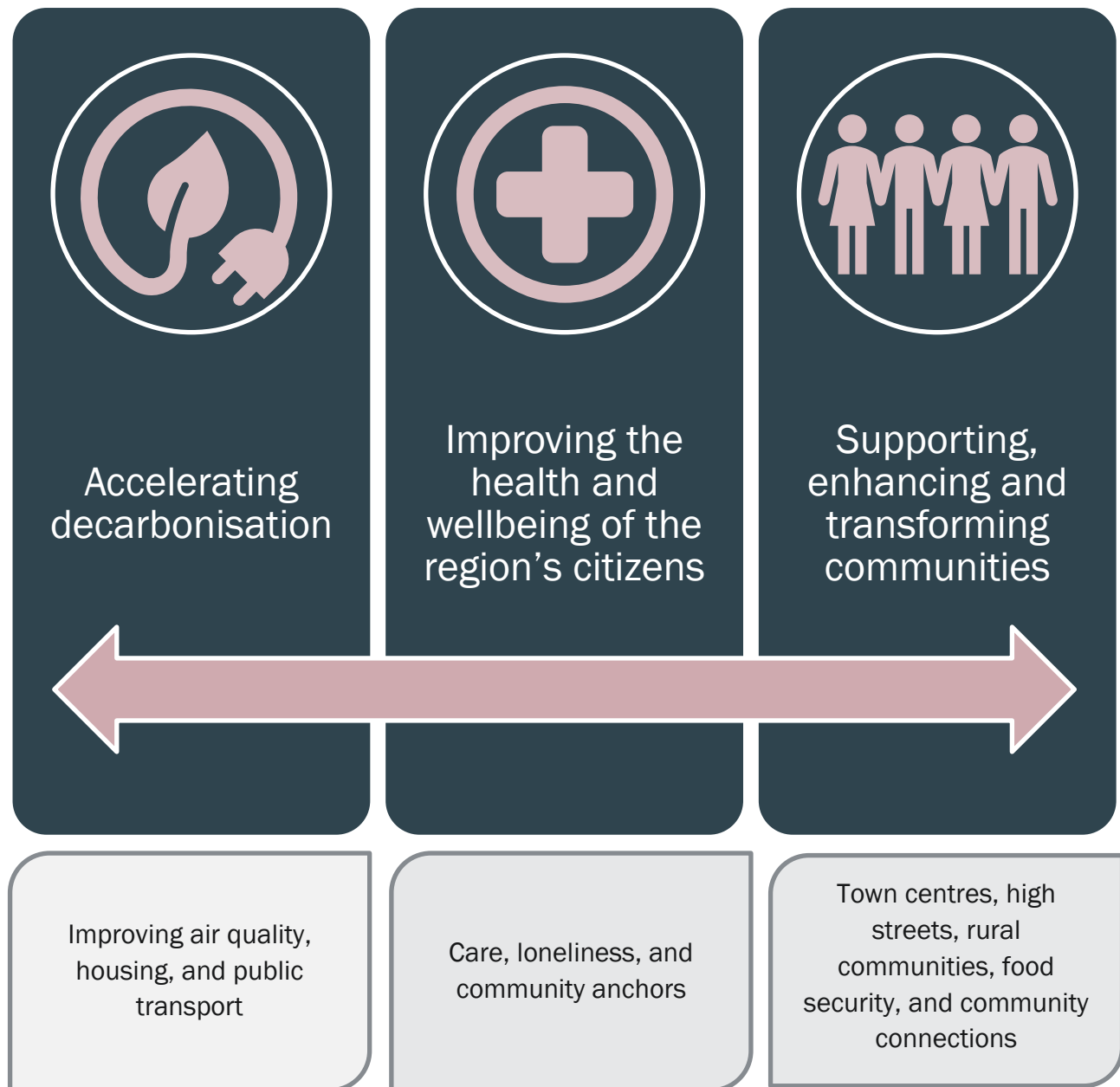
You will adopt a partnership approach in challenge development and will have support and guidance from our Challenge Fund delivery team.

During the challenge lifecycle, as the challenge owner, you are responsible for:

- Exploring innovative solutions to local economic challenges
- Tailoring solutions to improve local service delivery
- 'Breaking through' public procurement frameworks to create new markets

# The Challenge Fund Priority Themes

All challenges must address one or more of the following themes:





## Who is Eligible to Apply?

This call for Challenges is targeted at public sector bodies active in the Cardiff Capital Region wishing to develop and run challenges.

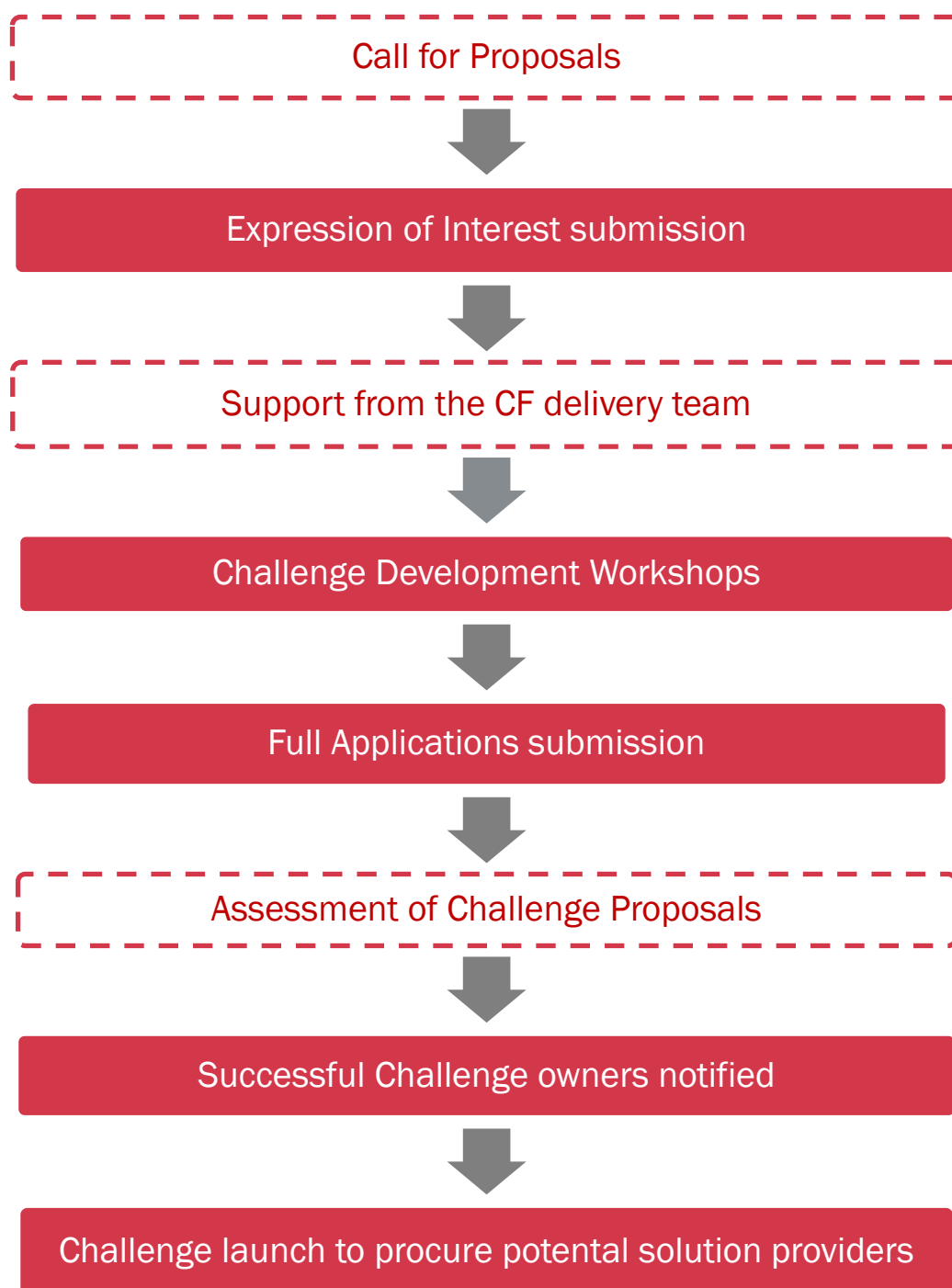
Any applicant to the CCR Challenge Fund must be subject to state aid rule (e.g. Local Authorities, Health Boards, Blue Light Services, government departments/ government agencies).

For challenges to receive funding each project should demonstrate collaboration with relevant organisations or projects, and must:

- Solve a societal challenge and improve public service delivery
- Co-create innovative solutions with potential solution providers (from any sector)
- Drive commercial scalable opportunities to deliver economic impact for the region



## The Application Process



## Challenge Assessment Criteria

All challenges should be well defined, and must address one or more of the identified priority themes:

- Supporting, enhancing and transforming communities
- Accelerating decarbonisation
- Improving health & well-being of citizens

All challenges will be assessed against the following assessment criteria:

<p><b>PROBLEM / NEED:</b></p> <p>The Challenge (problem) is well defined and understood by the Challenge Owner.</p>
<p><b>NEW KNOWLEDGE AND INNOVATION:</b></p> <p>The solution to the problem requires innovation and the production of new knowledge, products, services and/or capabilities (there is no 'off-shelf-solution' in existence).</p>
<p><b>OUTCOMES:</b></p> <p>At a minimum, successful outcomes will deliver performance improvements for public services (financial and non-financial). These should be significant, scalable and sustainable.</p>
<p><b>PLACE BASED APPROACH:</b></p> <p>Solutions will deliver performance improvements (societal benefits) and local wealth building outcomes within the Cardiff Capital Region.</p>
<p><b>PROCUREMENT:</b></p> <p>The Challenge approach can deliver benefits over and above traditional procurement approaches.</p>
<p><b>MARKET:</b></p> <p>There is or will be a route to market for solutions developed through the process. Challenge proposals will address the commercial viability of any solution directly.</p>
<p><b>IMPACT AND SCALE:</b></p> <p>The available resources to be engaged (financial and human) can realistically deliver a high impact in relation to the scale of problem.</p>
<p><b>CAPACITY AND CAPABILITY TO DELIVER:</b></p> <p>Is there a full team in place to deliver the challenge and is there a realistic plan within the timescale?</p>

## How to Apply

If you are a public sector body, think your challenge idea fits the CCR Challenge Fund and are interested in applying for support, we encourage you to submit your Expression of Interest online ASAP!

**1**

Complete the [Expression of Interest \(EOI\)](#) form online, or use the QR code below

**2**

Discuss your EOI with the Challenge Fund Delivery Team

**3**

Work with the Challenge Fund delivery team to develop your proposal

**4**

Submit your full application by **1st October 2021**



For more information, please visit:

<https://www.cardiff.ac.uk/innovation/our-partnerships/cardiff-capital-region-challenge>

Or contact us at: [CCRChallengeFund@cardiff.ac.uk](mailto:CCRChallengeFund@cardiff.ac.uk)



Cronfa  
Her  
Prifddinas  
Ranbarth  
Caerdydd

Cardiff  
Capital  
Region  
Challenge  
Fund

